

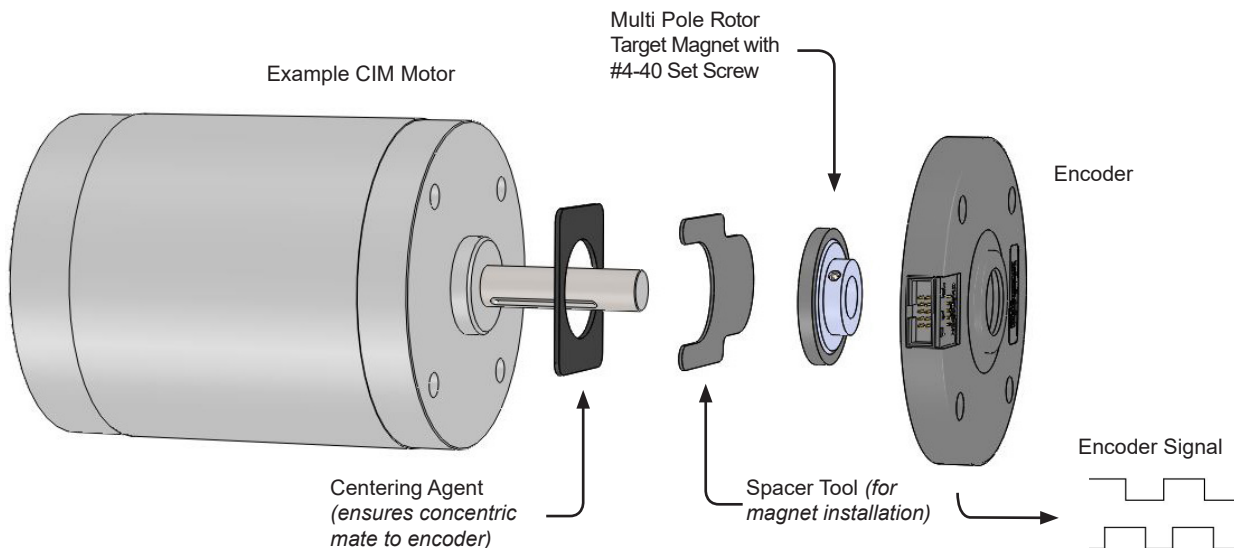
Features and Benefits

- Designed to mount on CIM motor drive side.
- 10 pin connector compatible with popular speed controllers.
- 2 channel quadrature output with 256 pulses per channel per revolution for sensing speed and direction.
- LED indicators for supply voltages and outputs
- Kit includes
 - Encoder
 - Target Magnet with set screw
 - Centering agent
 - Spacer tool for magnet installation
- Magnetic technology offers robust performance.
- 100% Non-Contacting design (no bearings or bushing) provides an extremely long life expectancy.

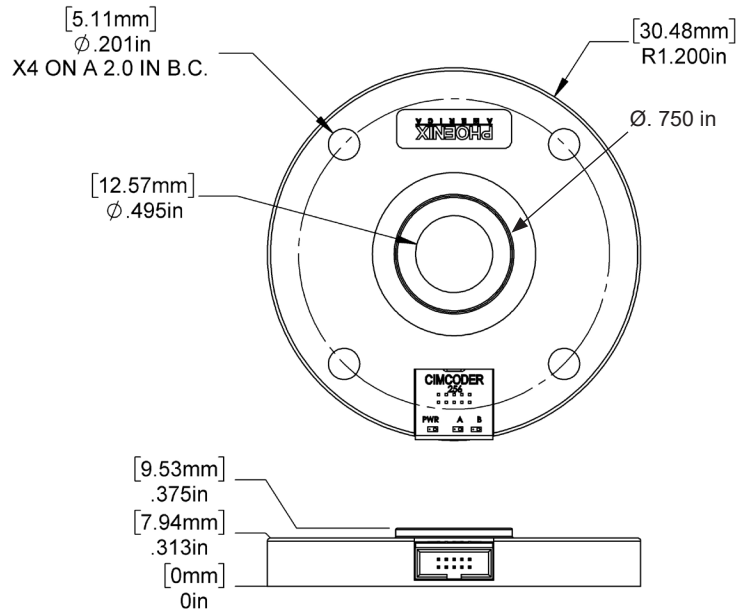


Kit - Encoder with Target Magnet, centering agent, and spacer/installation tool

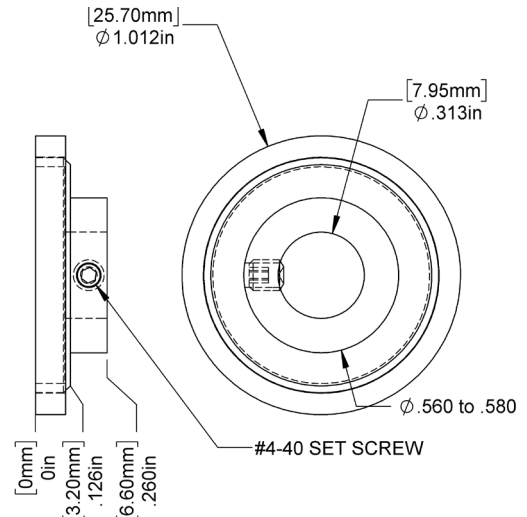
Application Example



Physical Outline



Target Magnet
32 Poles

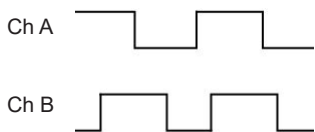


Note: Low resolution CimCoder target magnets have 40 poles and are NOT compatible with the high resolution 256 version which requires 32 poles.

Electrical Parameters

Pin #	Function	Type	Parameter	Notes:
1	3.3V Input	Supply for A/B Outputs	2.8 to 3.6 VDC	Supply Current 6.0 mA typical
2	5V Input	Supply for the Encoder	4.5 to 5.5 VDC	Supply Current 15 mA typical
7	Ch A	Open Collector with 3.3KΩ Internal Pull-up to 3.3V	0 to 3.3 VDC	Quadrature 256 pulses per channel per revolution (1024 edge transitions). Duty Cycle 40% to 60%, A/B phase shift 80° to 90°, Maximum frequency 100KHz. LED indicators for A/B channels are driven by the output pulse train. They should visibly flash while turning the shaft very slowly but will appear solid once the shaft is turning rapidly.
5	Ch B	Open Collector with 3.3KΩ Internal Pull-up to 3.3V	0 to 3.3 VDC	
10	GND	Common Ground	0V	

Signal Phasing



Channel A leads channel B with clockwise rotation when viewing the branded face of the encoder.

Operating Temperature -40°C to +95°C
Storage Temperature -55°C to +150°C

Pin Diagram

PIN#	FUNCTION
1	3.3V Supply Input
2	5V Supply Input
3	No Connection
4	No Connection
5	CH B Output
6	No Connection
7	Ch A Output
8	No Connection
9	No Connection
10	GND

CNC Tech - CONNECTOR INFORMATION

Encoder Side 3220-10-0200-00
Mating Connector 3230-10-0101-00

